

## Product datasheet for **TA150088**

### Clone OTI2B5, Anti-His mouse monoclonal antibody

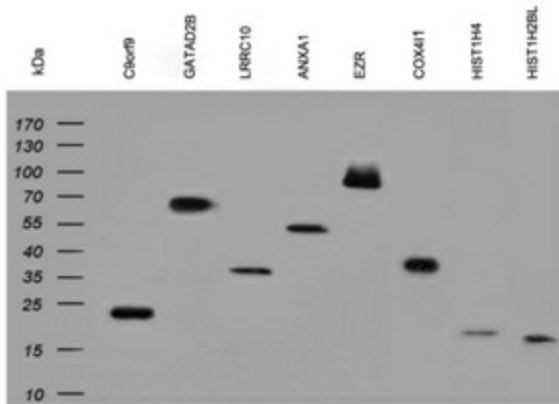
#### Product data:

Product Type:	Tag Antibodies
Product Name:	Clone OTI2B5, Anti-His mouse monoclonal antibody
Clone Name:	OTI2B5 (formerly 2B5)
Applications:	WB
Recommended Dilution:	WB 1:4000
Target:	His tag
Host:	Mouse
Clonality:	Monoclonal
Immunogen:	Anti-His monoclonal antibody is produced by immunizing mice with a synthetic peptide coupled to KLH
Isotype:	IgG1
Formulation:	PBS (pH 7.3) containing 1% BSA, 50% glycerol and 0.02% sodium azide.
Concentration:	4 mg/ml
Conjugation:	Unconjugated
Storage:	Store at -20°C.
Stability:	Stable for 1 year at -20°C from date of shipment.
Synonyms:	ANTI HIS, ANTI HISTIDINE, ANTIHIS, anti-His, his tag antibody, Anti-His Antibody, his antibody, anti his tag, anti-his tag



[View online »](#)

Product images:



Anti-His Immunoblot analysis of six different HEK293T over-expression lysates containing different His tagged recombinant proteins, and two his tagged bacterial lysate produced in E.coli. at 1:4000 dilution.

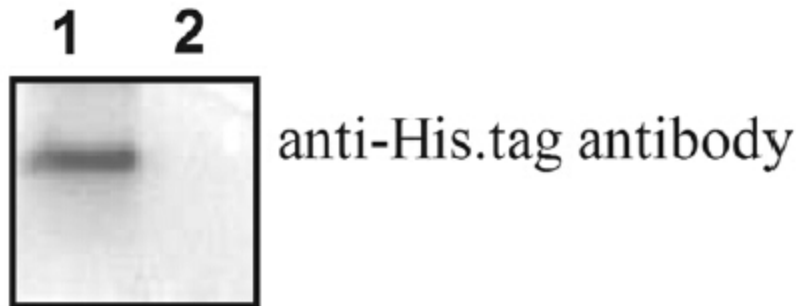


Figure from citation: Western Blot of His-fused protein level by using anti-His antibody. [View Citation](#)

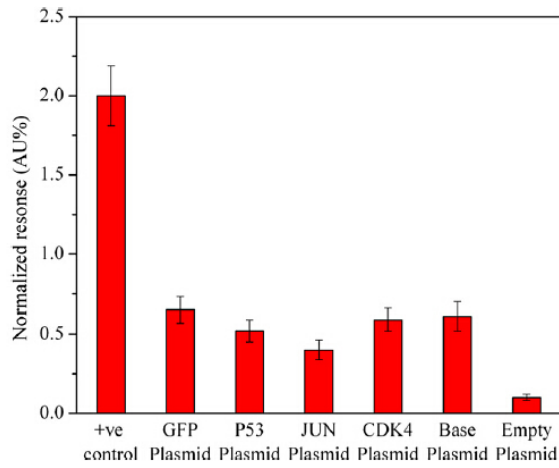


Figure from citation: Surface Plasmon Resonance assay of His-fused protein level by using anti-His antibody in in situ protein array [View Citation](#)